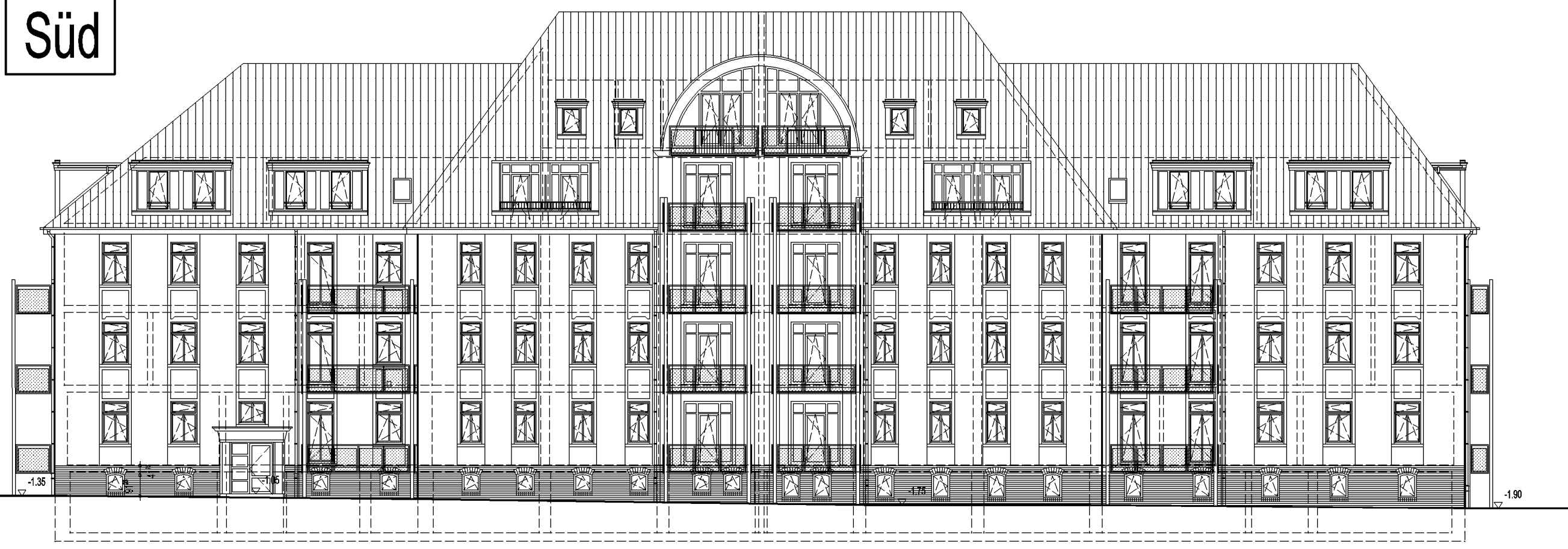


Süd



West



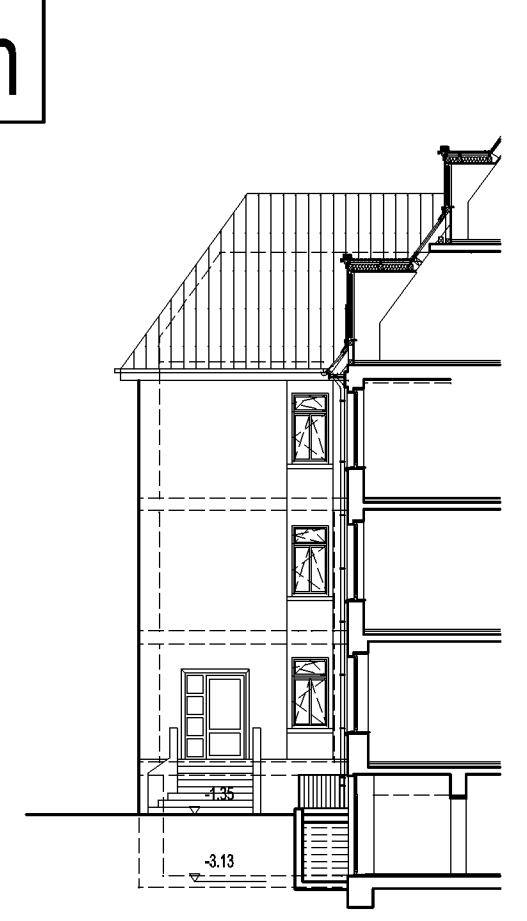
Ost



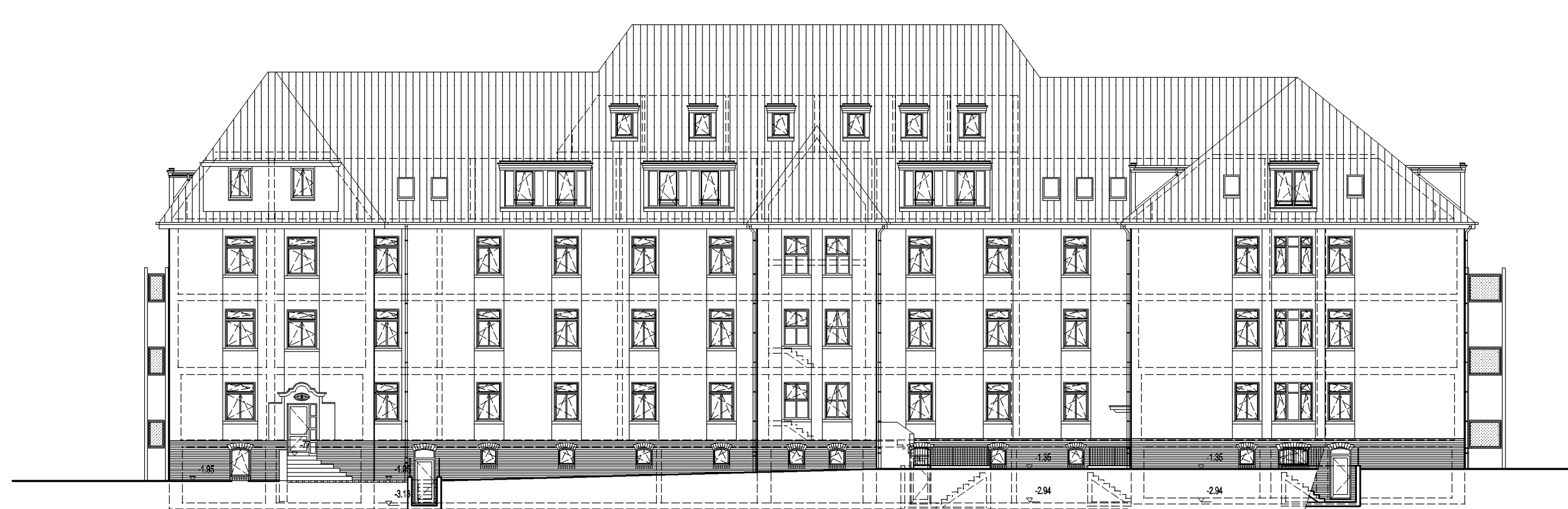
Ost innen



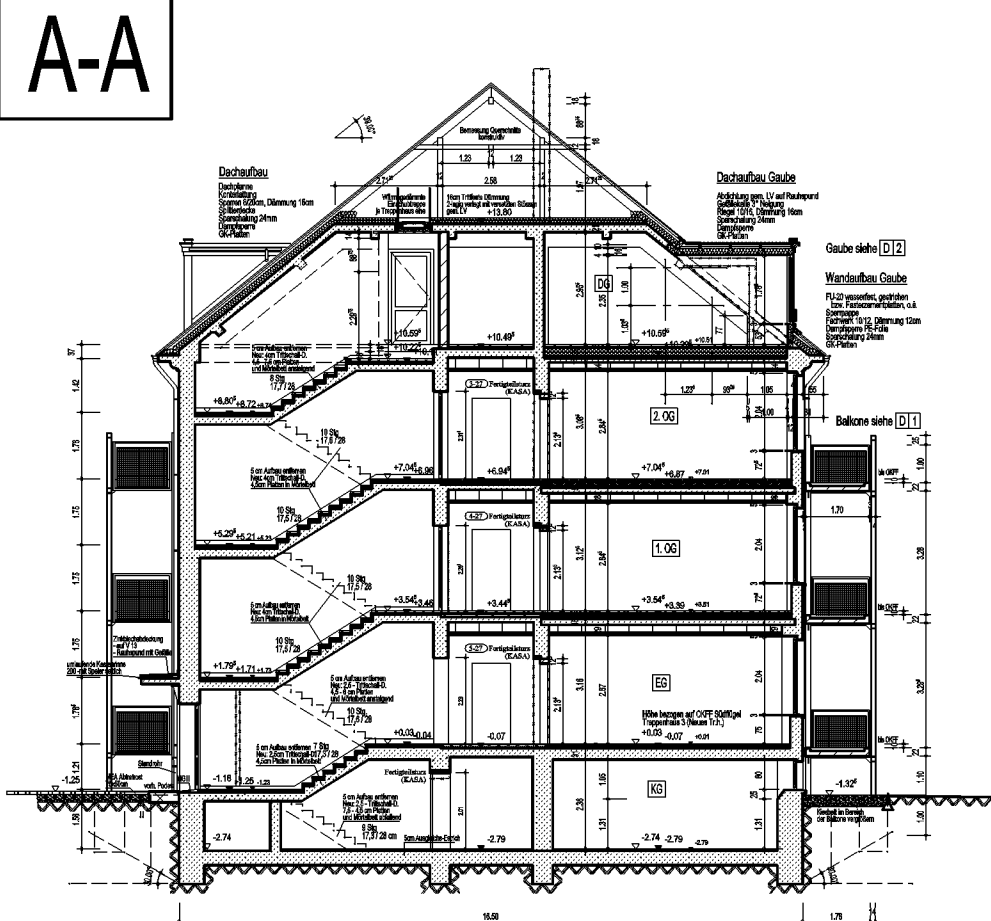
West innen



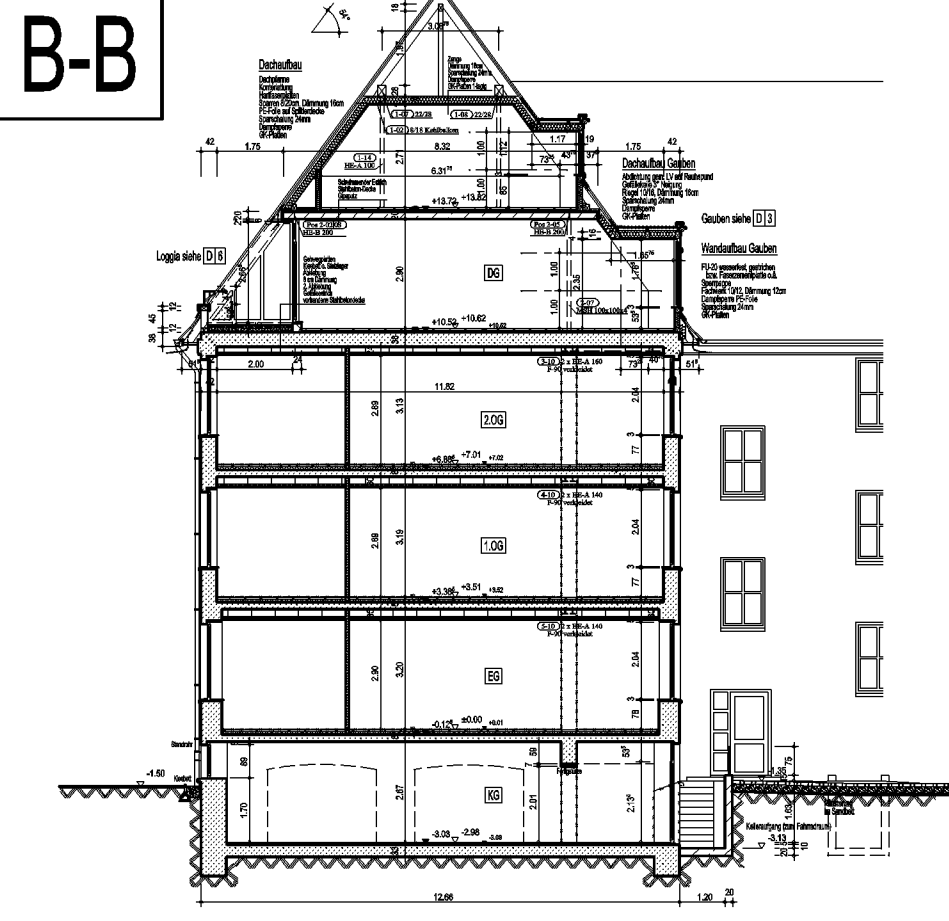
Nord



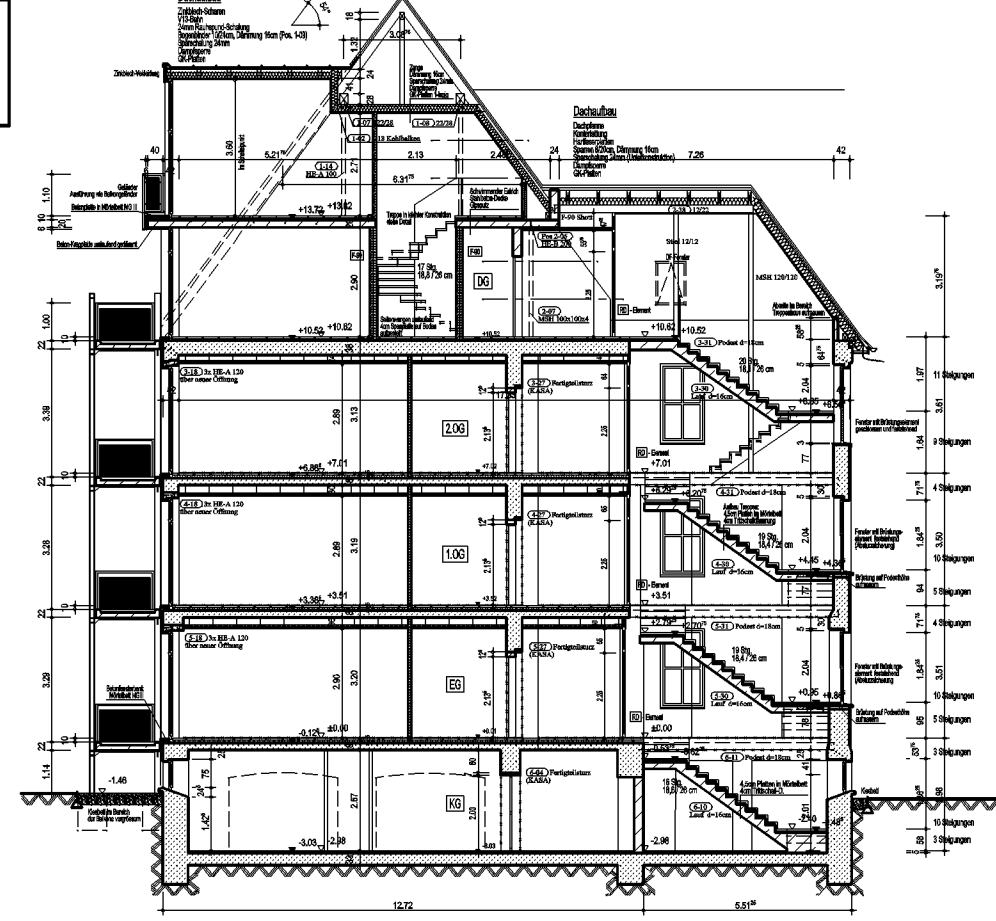
A-A



B-B

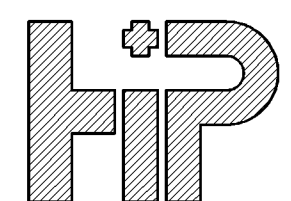


C-C

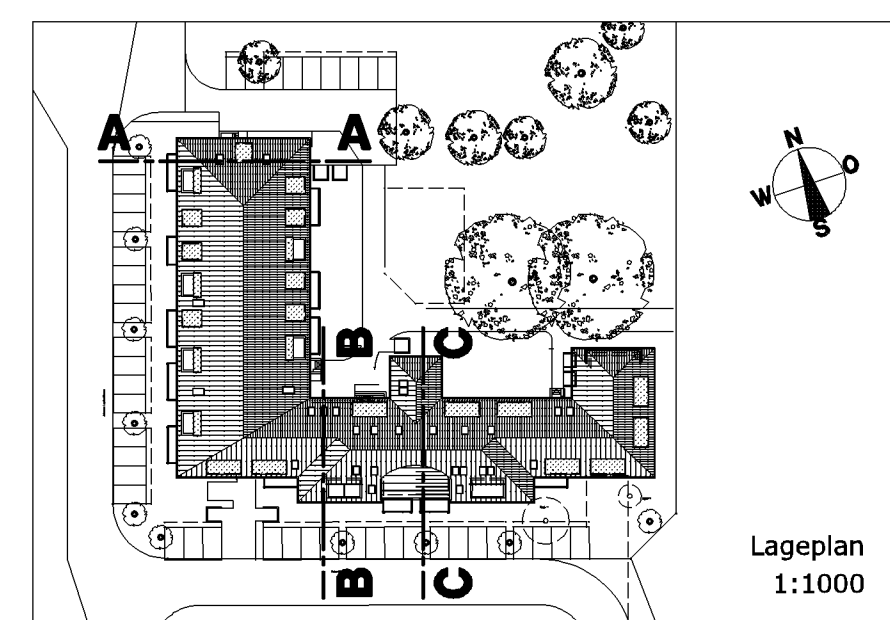


Datum	Verteiler	vert. SD	Plan Nr. 141	Projekt Nr. 20701
-	-	-	Bauherr Bau und Boden Pappelallee GmbH+CoKG	Stau 144
			26122 Oldenburg	
			Baustelle L-Gebäude	Johannes-Lepsius-Str.
			14469 Potsdam	
			Gezeichnet SD	Datum 01.12.2001
			Maßstab 1 : 200	Index des Plans -
			Unterschrift des Bauherrn	Datum
			Unterschrift des Architekten	Datum
F	-	-		
E	-	-		
D	-	-		
C	-	-		
B	-	-		
A	-	-		
Datum	Änderungen	gez.		

Architekturbüro



HÜPPE + PARTNER  
Architekten+Ingenieure  
Langenweg 26  
26125 Oldenburg  
Tel: (0441) 93566-30  
Fax: (0441) 93566-49



Projekt: **Johan.-Lepsius-Str. POTSDAM**  
Zeichnung: **verkleinert** **A 200**